

Just minutes from...

- Mesker Park Zoo & Botanic Garden
- Evansville Museum of Arts & Science
- Burdette Park
- Howell Wetlands
- Shopping
- Libraries
- Fine Dining
- Aztar Riverboat Casino & Entertainment Pavilion
- Hospital & Medical Facilities



For additional information
please call (812) 401-5500
or stop by
3701 Upper Mt. Vernon Road,
Evansville, IN 47712
to tour your future home today!



Condominiums

3701 Upper Mt. Vernon Rd.
Evansville, IN 47712

812-401-5500



Condominiums

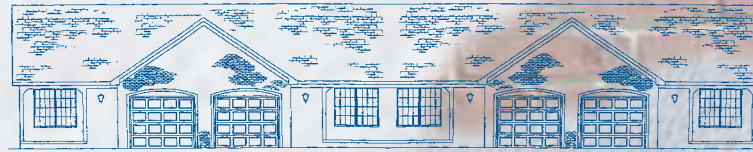
3701

**Upper Mt. Vernon Rd.
Evansville, IN 47712**

812-401-5500

The Brickyard Condominiums

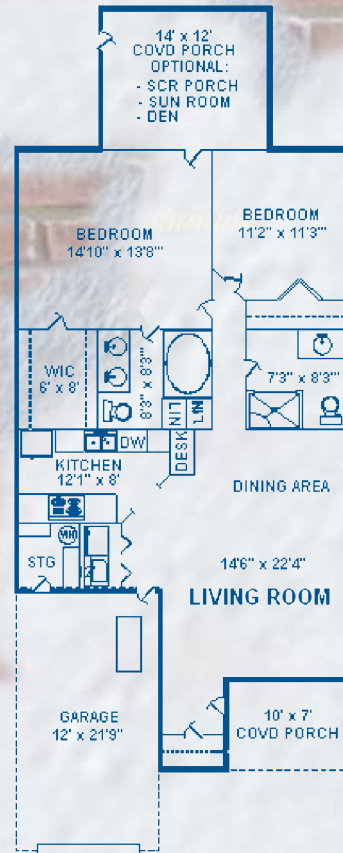
At "The Brickyard" particular attention has been put into the carefully designed floor plan to ensure a carefree life style. Never have to worry about maintenance or lawn care while still choosing to invest your money.



Nestled in the rolling hills of the Westside of Evansville, you will come home to the best combination of carefree living, impeccable service, convenient location and outstanding value for your money. Offering you a comfortable and pleasant atmosphere that is second to none!

Inside your elegant condo you will enjoy: beautifully designed interiors with spacious living room and bedrooms; fully equipped kitchen featuring Whirlpool appliances and an abundance of cabinets; furnished side by side Whirlpool washer and dryer units; built in computer desk; flexibility with a large walk-in shower and luxurious garden tub; single car garage with additional attic storage; and an extra 168 square feet of customizable space.

Come home to the tranquility of lush foliage surrounding our scenic two acre lake while enjoying the convenience of location. Situated just off the Lloyd Expressway you are just minutes away from shopping, banking, medical professional services and entertainment.



Featured Amenities...

- Whirlpool frost free refrigerator/freezer with an ice maker
 - Whirlpool electric self clean range
 - Whirlpool high efficiency dishwasher
 - Garbage disposal
 - Spacious kitchen cabinetry & beautiful counter tops
 - No steps
 - Handicap accessible
 - Three foot wide doorways
 - Pantry storage area
 - Built-in computer desk
 - Convenient walk-in shower with seat
 - Luxurious garden tub
 - Linen closets
 - Full size Whirlpool washer & dryer units
 - Spacious closets including 8' x 6' walk-in
 - Large single car garage
 - Additional attic storage
 - Quaint covered front porch
 - Scenic lake front lots available
 - Customizable 14' x 12' covered patio*
- * Options include:
- Screened in porch
 - Sun room
 - Den
 - Additional costs apply



Starting at \$ _____